

PROFORM

CONSTRUCTION PRODUCTS

RESIDENTIAL PRECAST 2023 CATALOGUE & PRODUCT DESIGN GUIDE



Helping Build Communities from the Underground Up



Sales Contact..... 3
Company History 4

RESIDENTIAL PRECAST PRODUCTS 5

About Residential Precast Products..... 6
Standard Finish Steps 7
Presidential Steps & Decks 8
Presidential Recess Decks 9
Exposed Steps & Decks..... 10
Stonehenge Steps & Decks 10
Side Entry Steps 11
Stairwells 12
Window Wells..... 13
Brackets..... 14
Step Replacement 15

Need Help? Contact us today to request a quote or get more information about our products.

MARCUS: Cell: 403-801-9025
CALGARY/RED DEER Office: 403-261-3851

MICHELLE: Cell: 780-236-0508
EDMONTON Toll Free: 800-859-5541

HEAD OFFICE: Office: 403-343-6099
Toll Free: 800-859-5541



SALES & QUOTE REQUESTS

RESIDENTIAL PRECAST

EDMONTON & NORTHERN ALBERTA

Michelle Phillips
Technical Sales Representative
780.236.0508
michelle.phillips@proform.ca

CALGARY, RED DEER & SOUTHERN ALBERTA

Marcus Laschinsky
Sales Manager, Residential Precast
403.801.9025
marcus.laschinsky@proform.ca

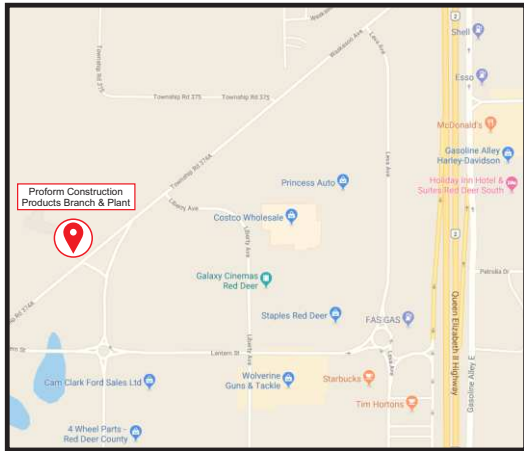
UNDERGROUND PRECAST & GENERAL PRECAST

info@proform.ca or visit www.proform.ca/contact

LOCATIONS

HEAD OFFICE:

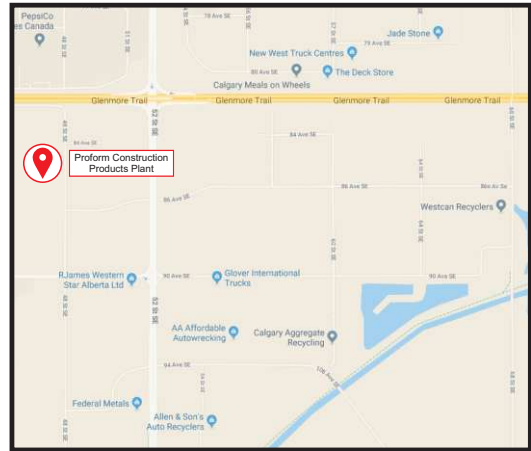
Office: 403-343-6099 | Toll Free: 800-859-5541 | 240 Burnt Park Way, Red Deer County, AB T4S 2L4



RED DEER PLANT

Proform Construction Products
Office: 403-343-8000
Toll Free: 800-859-5541

564 Laura Ave, Red Deer County, AB T4E 0A5



CALGARY PLANT

Proform Construction Products
Office: 403-261-3851
Toll Free: 800-859-5541

110, 8615 48 Street SE, Calgary, AB T2C 2P8

Need Help? Contact us today to request a quote or get more information about our products.

MARCUS: Cell: 403-801-9025
CALGARY/RED DEER Office: 403-261-3851

MICHELLE: Cell: 780-236-0508
EDMONTON Toll Free: 800-859-5541

HEAD OFFICE: Office: 403-343-6099
Toll Free: 800-859-5541



COMPANY HISTORY

OUR VISION:

Helping build communities from the underground up.

OUR MISSION:

Breaking ground to project completion - we deliver a wide range of concrete products and services tailored to our customers needs. We will reinvest our profits into the company as we strive for operational excellence.



Proform's story began in 1975 with a family formed company named HEB Developers Ltd. In the late 1980's, HEB Developers Ltd became Proform Concrete Services to enable expansion into a larger variety of products and services. A precast concrete division was formed in 1990 so Proform purchased a 28-acre site southwest of Red Deer in Gasoline Alley to begin manufacturing precast products. Two expansions on the plant were required in the 90's to keep up with demand due to continued growth.



In 2011 Proform began supplying waterworks products that complimented our precast products we were already supplying such as concrete manholes, catch basins and vault structures.

In 2014, we added interior and exterior decorative concrete finishes. Some of the finishes include grind and polished, colored epoxies, stamped, exposed and stenciled.

In 2018 we continued to grow. We acquired Vic's Concrete Finishing in Red Deer and Key Concrete Products in Calgary, expanded our services to include concrete pipe and rebranded our divisions.

Early in 2019, Proform purchased Norstair Precast Step Systems. This was a natural fit since the precast steps Norstair sold were exclusively manufactured in Proform's Calgary plant. Later in the year, Proform signed a Distribution Agreement with Emco Corporation giving their divisions, Emco Waterworks and KANN Supply, rights to stock and distribute Proform's precast manholes and catch basins at all of their locations. This partnership delivers outstanding service and ensures customers have access to the products they need at more locations.

Today, Proform is one of the largest slip-form concrete contractors and a market leader for custom precast steps in Alberta. The changes we have made over the years prove that we are approaching the future with our clients best interest at heart and know they will help to better service our clients.

Need Help? Contact us today to request a quote or get more information about our products.

MARCUS: Cell: 403-801-9025
CALGARY/RED DEER Office: 403-261-3851

MICHELLE: Cell: 780-236-0508
EDMONTON Toll Free: 800-859-5541

HEAD OFFICE: Office: 403-343-6099
Toll Free: 800-859-5541



PROFORM

CONSTRUCTION PRODUCTS



RESIDENTIAL PRECAST PRODUCTS

Helping Build Communities from the Underground Up

CALGARY PLANT
Office: 403-261-3851 | TF: 800-859-5541

EDMONTON
Office: 780-236-0508 | TF: 800-859-5541

HEAD OFFICE
Office: 403-343-6099 | TF: 800-859-5541

ABOUT OUR RESIDENTIAL PRECAST PRODUCTS

Our residential precast product line consists of concrete steps and decks, single and double side entry steps, stairwells, window wells, brackets and step replacement.

Proform's manufacturing plants have decades of experience. Our wide range of step and deck molds can produce a minimum of 35 custom steps and decks per 8 hour shift. The controlled production environment allows for a superior finish and year round manufacturing and installation.

Our precast concrete steps and decks are produced in four distinguished products lines: Standard Finish, Presidential, Exposed and Stonehenge. Each are fully customizable (width, depth, rise) with a variety of color and aggregate options.

We're confident our quality product combined with highly experienced sales, customer service and installation specialists, will ensure you'll be satisfied with the end result for years to come.



Need Help? Contact us today to request a quote or get more information about our products.

MARCUS: Cell: 403-801-9025
CALGARY/RED DEER Office: 403-261-3851

MICHELLE: Cell: 780-236-0508
EDMONTON Toll Free: 800-859-5541

HEAD OFFICE: Office: 403-343-6099
Toll Free: 800-859-5541

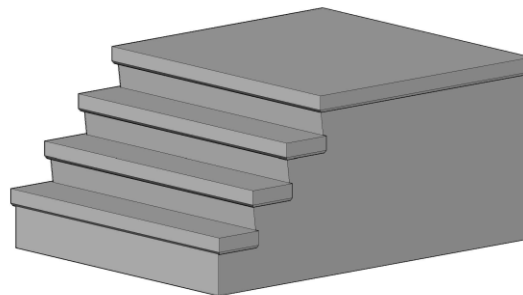
PROFORM
CONSTRUCTION PRODUCTS

STANDARD FINISH STEPS

Our standard finish steps are a great option for new or existing homes. A distinctive bull nosing around the landing and riser perimeter with a form finish on all vertical surfaces compliments the traditional broom finish on all horizontal surfaces. These precast custom steps range in size up to a maximum landing width and depth of 16' x 8' with up to 6 risers. They are adjustable and can be produced for angled entries as well.



4 RISE STANDARD STEP



Need Help? Contact us today to request a quote or get more information about our products.

MARCUS: Cell: 403-801-9025
CALGARY/RED DEER Office: 403-261-3851

MICHELLE: Cell: 780-236-0508
EDMONTON Toll Free: 800-859-5541

HEAD OFFICE: Office: 403-343-6099
 Toll Free: 800-859-5541

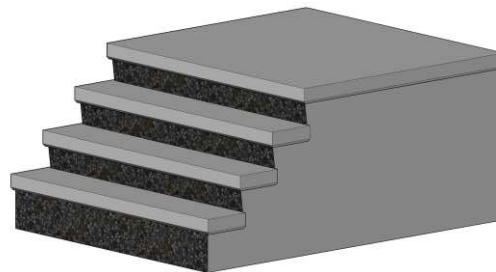
PROFORM
 CONSTRUCTION PRODUCTS

PRESIDENTIAL STEPS AND DECKS

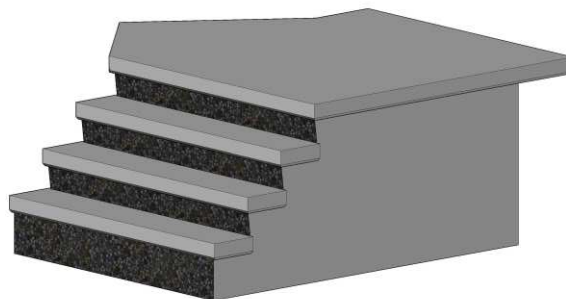
Our popular Presidential Series is cast with a bull nosing around the landing and riser perimeter, broom finish on all horizontal surfaces and a form finish on all vertical surfaces. Additionally, the riser face is etched giving these steps distinctive architectural lines. These precast custom steps range in size up to a maximum landing width and depth of 16' x 8' with up to 6 risers. They are adjustable and can be produced for angled entries.



4 RISE STEP - ETCHED



PRESIDENTIAL STEPS AND DECKS FOR ANGLED DOORWAYS



Need Help? Contact us today to request a quote or get more information about our products.

MARCUS: Cell: 403-801-9025
CALGARY/RED DEER Office: 403-261-3851

MICHELLE: Cell: 780-236-0508
EDMONTON Toll Free: 800-859-5541

HEAD OFFICE: Office: 403-343-6099
 Toll Free: 800-859-5541

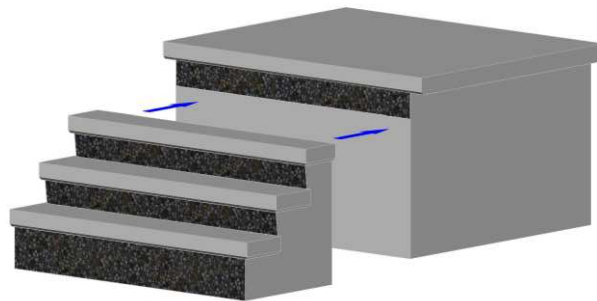
PROFORM
 CONSTRUCTION PRODUCTS

PRESIDENTIAL RECESS DECKS

Recess precast decks are cast with the same bull nosing, broom finish surface and form finish vertical surface as our regular decks however, and they come with a recessed skirting allowing installation of cultured stone or brick. Because of the recess skirting, the landing creates a natural weather break helping eliminate stone "popping" due to water penetration. These custom recess decks can range in size up to a maximum landing width and depth of 16' x 8' with up to 6 risers with a recess option from 2 ½" to 5 ½".



4 RISE DECK - ETCHED



Need Help? Contact us today to request a quote or get more information about our products.

MARCUS: Cell: 403-801-9025
CALGARY/RED DEER Office: 403-261-3851

MICHELLE: Cell: 780-236-0508
EDMONTON Toll Free: 800-859-5541

HEAD OFFICE: Office: 403-343-6099
 Toll Free: 800-859-5541

PROFORM
 CONSTRUCTION PRODUCTS

EXPOSED STEPS AND DECKS

Complementary to the bull nosing, the entire surface of this product is exposed to create an air of elegance to any home. These custom precast steps and decks can range in size to a maximum landing width and depth of 16' x 8' with up to 6 risers. This finish option is available with our Steps, Decks and Recess Decks. Pigments are available upon request.



STONEHENGE STEPS AND DECKS

The Stonehenge design is an exclusive product you'll only find at Proform! Make a statement to the entrance of your home with our Stonehenge product line.

The stamped surface emulates the natural beauty of a quarry stone. The broken stone appearance on the perimeter combined with the full etching gives this product natural depth and architectural lines found only in natural stone. These custom precast steps and decks can range in size to a maximum landing width and depth of 16' x 8' with up to 6 risers. This finish option is available with our steps, decks and recess decks. Various colour options are available upon request.



Need Help? Contact us today to request a quote or get more information about our products.

MARCUS: Cell: 403-801-9025
CALGARY/RED DEER Office: 403-261-3851

MICHELLE: Cell: 780-236-0508
EDMONTON Toll Free: 800-859-5541

HEAD OFFICE: Office: 403-343-6099
 Toll Free: 800-859-5541

PROFORM
 CONSTRUCTION PRODUCTS

SIDE ENTRY STEPS

Our single and double side entry precast concrete steps are a cost-effective, multipurpose option for side entrances, secondary suites or mother-in-law suites. Both the single and double side entry steps have a standard 60" depth of landing and can be customized in width from 36" to 48" in order to alleviate most property line or fencing challenges. All our precast are available in 1-6 risers and have a distinctive bull nosing around the perimeter of the landing and risers. Our entry level step has a non-slip broom finish surface with form finish riser face and skirt. Upgrade to the Presidential Finish and receive the same broom finish surface but with Etched Riser face and/or full etched skirting. We can also upgrade these steps to have a true fully exposed finish.

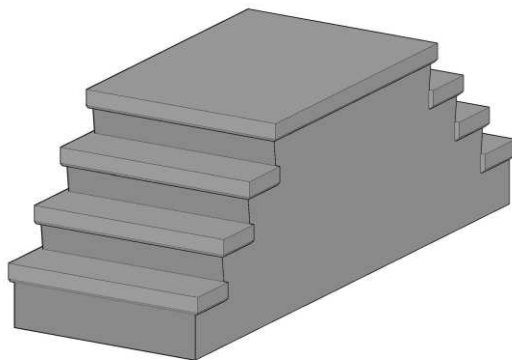
SINGLE SIDE ENTRY



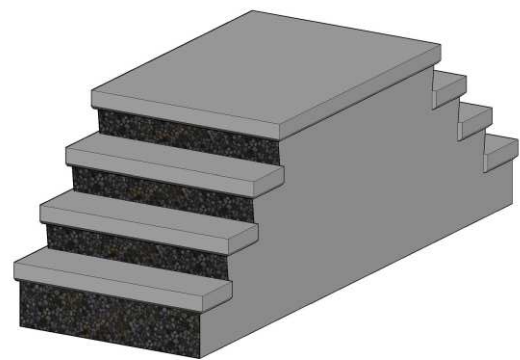
DOUBLE SIDE ENTRY



DOUBLE SIDE ENTRY - NON ETCHED



DOUBLE SIDE ENTRY - ETCHED



Need Help? Contact us today to request a quote or get more information about our products.

MARCUS: Cell: 403-801-9025
CALGARY/RED DEER Office: 403-261-3851

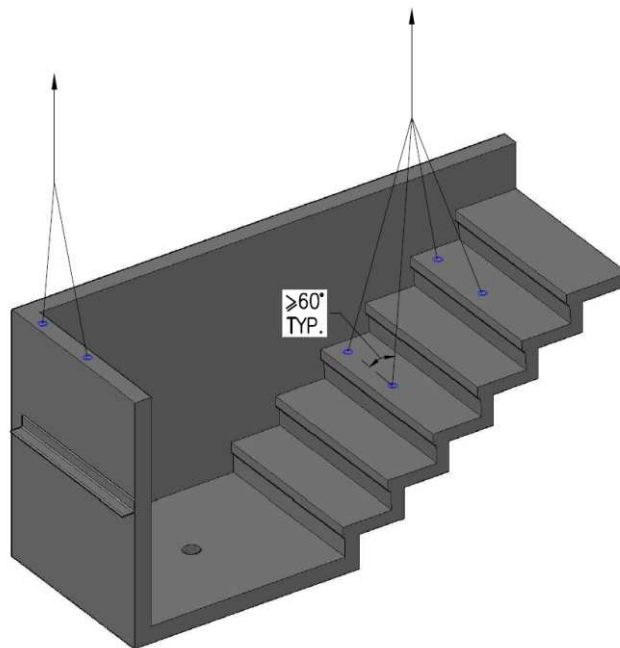
MICHELLE: Cell: 780-236-0508
EDMONTON Toll Free: 800-859-5541

HEAD OFFICE: Office: 403-343-6099
 Toll Free: 800-859-5541



STAIRWELLS

Our precast concrete stairwells are a versatile and cost effective option for secondary suites and are well suited for both rear and side walk ups. The stairwell width is adjustable from 48" to 36" eliminating most property line issues and available up to 6 risers. A 4" drainage hole is cast into the floor to allow for a plumbing hook up. The sides of this stairwell are smooth finish and the risers are cast with broom finish and our distinctive bull nosing.



Need Help? Contact us today to request a quote or get more information about our products.

MARCUS: Cell: 403-801-9025
CALGARY/RED DEER Office: 403-261-3851

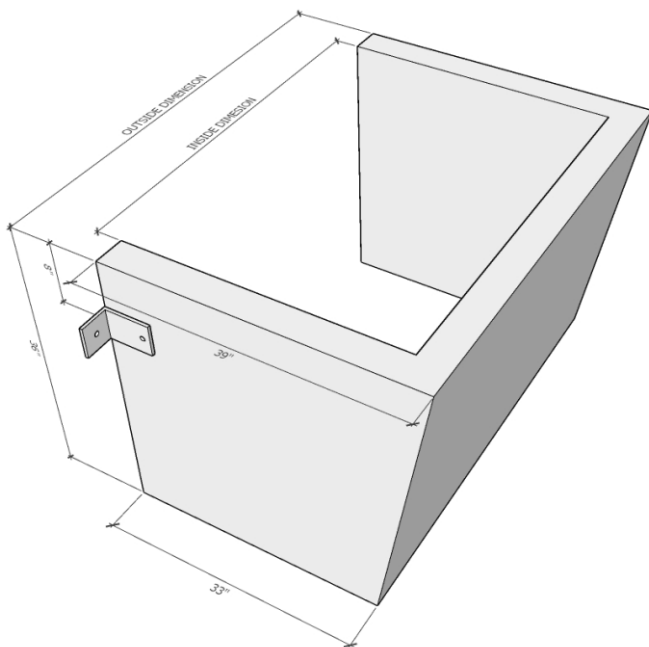
MICHELLE: Cell: 780-236-0508
EDMONTON Toll Free: 800-859-5541

HEAD OFFICE: Office: 403-343-6099
Toll Free: 800-859-5541

PROFORM
CONSTRUCTION PRODUCTS

WINDOW WELLS

Precast concrete window wells are a great option on any home, for both new construction or renovations. These window wells come in a smooth or exposed finish and range in size from 4' to 8' in width. The standard window well height is 3' with 6" and 12" extension available allowing flexibility for use on larger basement windows. Our window wells are an elegant option that allow for superior light filtering into the basement and comply with local egress codes.



INSIDE DIMENSION (in)	OUTSIDE DIMENSION (in)	TOTAL HEIGHT DIMENSION (in)	TOTAL WEIGHT (kg)
48"	56"	36"	680 kg
56"	64"	36"	725 kg
72"	80"	36"	815 kg
80"	88"	36"	860 kg
96"	104"	36"	955 kg
6" AND 12" EXTENSIONS AVAILABLE			

Need Help? Contact us today to request a quote or get more information about our products.

MARCUS: Cell: 403-801-9025
CALGARY/RED DEER Office: 403-261-3851

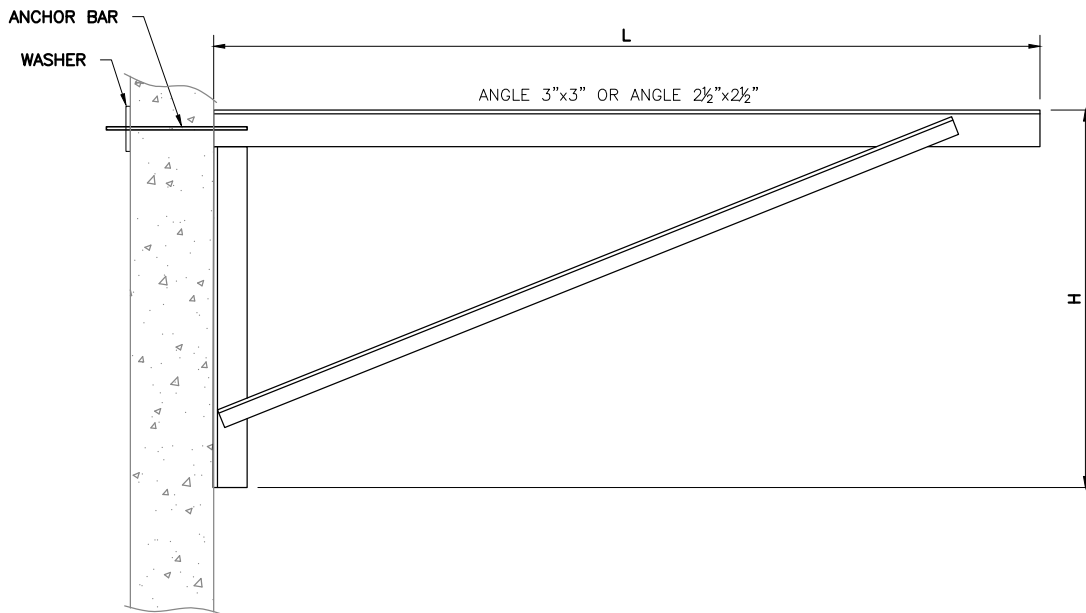
MICHELLE: Cell: 780-236-0508
EDMONTON Toll Free: 800-859-5541

HEAD OFFICE: Office: 403-343-6099
 Toll Free: 800-859-5541



BRACKETS

Our metal brackets come in multiple sizes to suit all precast step and deck installation situations. Due to their lightweight fabrication, our brackets are multi-functional and perfectly suited for applications on the front, side or rear of a home. Bracket sizes range from 2' to 14' and are carried in stock.



H (in)	L (in)
12	24
15	36
18	42
20	48
24	52
28	60
30	64
30	72
30	78
30	84
30	96
38	108
38	120
48	144
48	168

Need Help? Contact us today to request a quote or get more information about our products.

MARCUS: Cell: 403-801-9025
CALGARY/RED DEER Office: 403-261-3851

MICHELLE: Cell: 780-236-0508
EDMONTON Toll Free: 800-859-5541

HEAD OFFICE: Office: 403-343-6099
Toll Free: 800-859-5541



STEP REPLACEMENT

Do you have old, cracked or peeling precast concrete steps?

Are your steps tired, broken or showing wear?

Do you have a wooden step that is falling apart and want a long term, no maintenance solution?

If so, contact Proform's personnel with over 40 years of experience in the precast industry to come to your home and conduct a no-charge site assessment and quote. We will even remove and dispose of the old steps before replacing them with a brand new, durable precast concrete step.

BEFORE



AFTER



BEFORE



AFTER



Need Help? Contact us today to request a quote or get more information about our products.

MARCUS: Cell: 403-801-9025
CALGARY/RED DEER Office: 403-261-3851

MICHELLE: Cell: 780-236-0508
EDMONTON Toll Free: 800-859-5541

HEAD OFFICE: Office: 403-343-6099
 Toll Free: 800-859-5541

PROFORM
 CONSTRUCTION PRODUCTS



OUR VISION: *Helping Build Communities From The Underground Up*

CALGARY PLANT

Proform Construction Products

Office: 403-261-3851

Toll Free: 800-859-5541

110, 8615 48 Street SE, Calgary, AB T2C 2P8

EDMONTON

Proform Construction Products

Office: 780-236-0508

Toll Free: 800-859-5541

HEAD OFFICE

Proform Concrete Services / Proform Construction Products

Office: 403-343-6099

Toll Free: 800-859-5541

240 Burnt Park Way, Red Deer County, AB T4S 2L4

WWW.PROFORM.CA | 800-859-5541