

# **PROFORM**

## **CONCRETE SERVICES**



**CIVIL, INDUSTRIAL & COMMERCIAL**



# **PROFORM** **CONCRETE SERVICES**

Proform is a professional concrete contractor that has been serving Western Canada and the Northwest Territories for over 40 years. We offer a wide array of products for civil, industrial, commercial and residential sectors.



Proform Concrete Services is a division of Proform that offers concrete solutions such as general concrete construction, foundations, slabs, concrete paving, curb, gutter, sidewalks and decorative finishes where performance, value, durability and concern for the environment are essential.



Proform is a locally owned and operated company that excels at customizing products to suit our customers needs and specifications. We combine quality with extensive product knowledge and a true commitment to customer service. From inception to completion, Proform has you covered every step of the way. *We're your One Stop Shop!*



**SERVING WESTERN CANADA SINCE 1975**

# CIVIL, INDUSTRIAL & COMMERCIAL FOUNDATIONS & SLABS

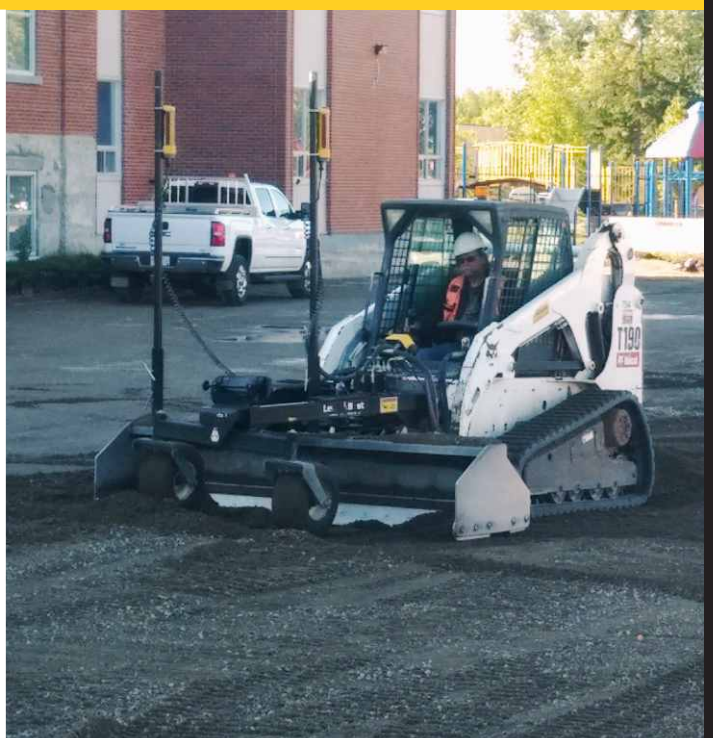
Concrete foundations and slabs require efficient planning. Trust our experienced team, whether commercial, industrial or civil, to ensure your next building project begins with a solid foundation.

- Water Treatment Plants
- Reservoirs
- Lift Stations
- Windmill Bases
- Industrial Slabs
- Parkades
- Schools
- Recreation Facilities
- Hospitals
- Pools / Spray Parks
- Machinery Pads
- Greenhouses
- RV Pads
- Patios
- Shops
- Garages
- Quonsets
- Grain Bins
- Warehouses



# SUB-GRADE AND COMPACTION BASE CONSTRUCTION

A good base is everything! What lies below your concrete slab is critical to the quality and success of the job. Let Proform look after the base construction and worry about details like granular base, sub-grade, drainage and compaction.



# CURB, GUTTER & SIDEWALKS SITE WORKS

In 1977, Proform was one of the first companies in Alberta to adopt slip-form technology for extruding concrete curbs, gutters and sidewalks. Today, we are industry leaders in slip-forming and hand pouring curbs, gutters and sidewalks throughout Western Canada. We work closely with our clients to ensure projects are completed on time and within budget.

- New City Developments
- Hospitals
- Shopping Centres
- Commercial Buildings
- Warehouses
- Repairs

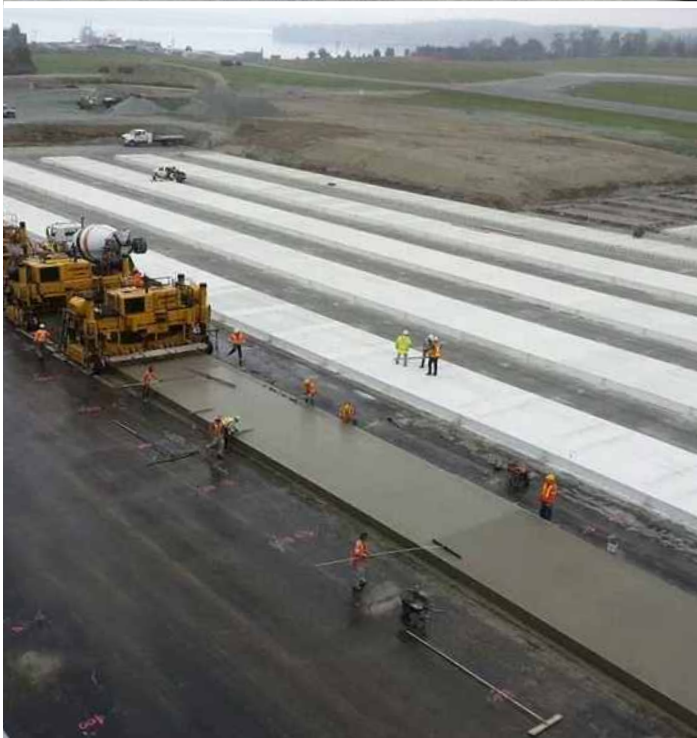
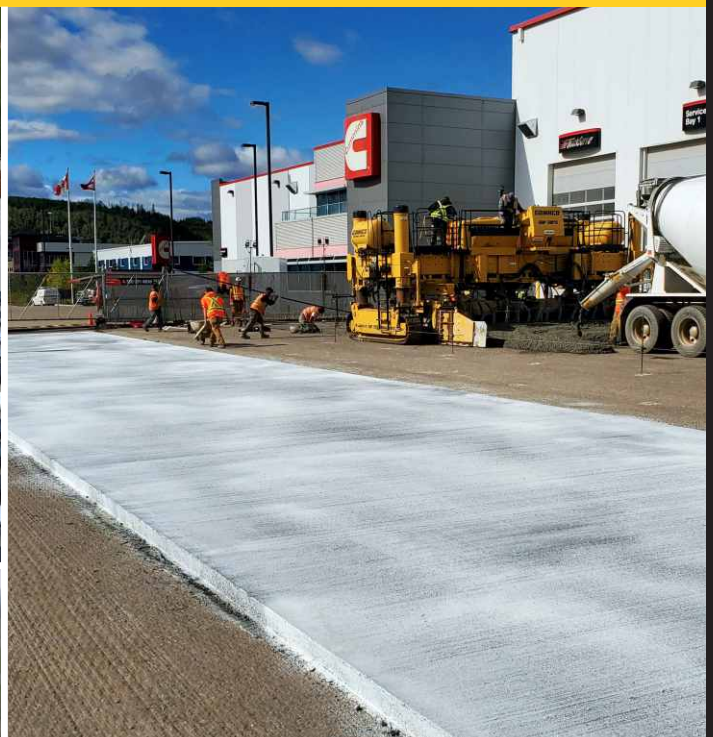


# COMMERCIAL & INDUSTRIAL CONCRETE PAVING

Proform offers full depth concrete paving, bonded concrete overlays and thin concrete pavements. Concrete paving offers durability and an extended life cycle while eliminating potholes and rutting.

**Awards:** Proform is the proud winner of the American Concrete Institute (ACI) 2017 Award of Excellence in Concrete for our work on the 67th Street Corridor Project located in Red Deer, Alberta which is the first fully concrete paved roundabout in Western Canada.

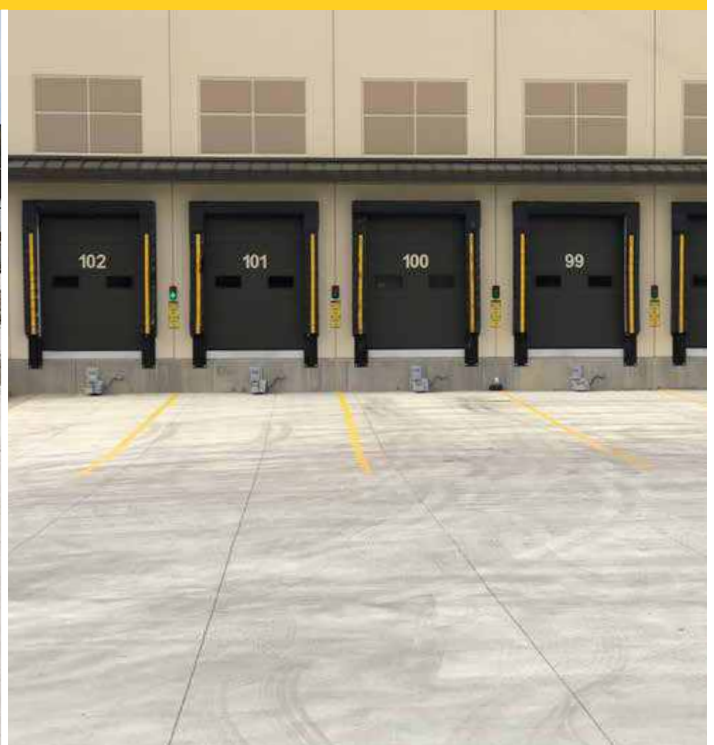
- Parking Lots / Parkades
- Industrial Sites
- Loading Areas / Warehouses
- Roundabouts / Traffic Circles
- Roads / Intersections
- Airports



# COST EFFECTIVE ALTERNATIVE TO ASPHALT THIN CONCRETE PAVEMENT

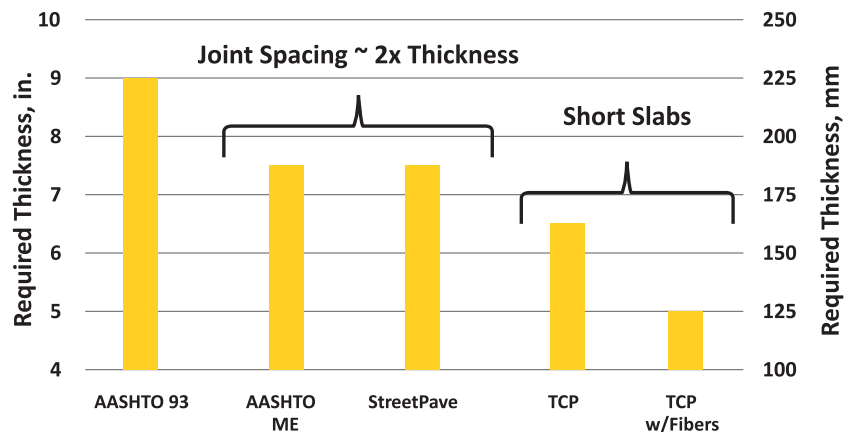
Our partnership with PNA Construction Technologies allows us to offer their innovative pavement designs which cost-effectively replaces asphalt with long-lasting, low-maintenance concrete. We can also customize pavement designs within a facility to account for different traffic and load conditions to maximize cost savings. For example, heavy-traffic truck aprons and loading docks might use a reinforced concrete design with optimized doweling, while the construction of car entrances and parking lots could leverage PNA's patented Thin Concrete Pavement (TCP) system.

- Parking Lots
- Loading Docks



## Reduce Construction Costs

By distributing wheel loads over shorter panels, TCP allows concrete volume to be minimized while maintaining the same load-bearing capacity. Slab thickness can often be reduced by 2 inches or more, saving up to 30 percent in material costs while expediting placement work. In some cases, base and sub-base materials can also be conserved providing additional savings.



Above designs based on 500 trucks/day in freeze-thaw climate.  
All other inputs are the same across design methodologies.

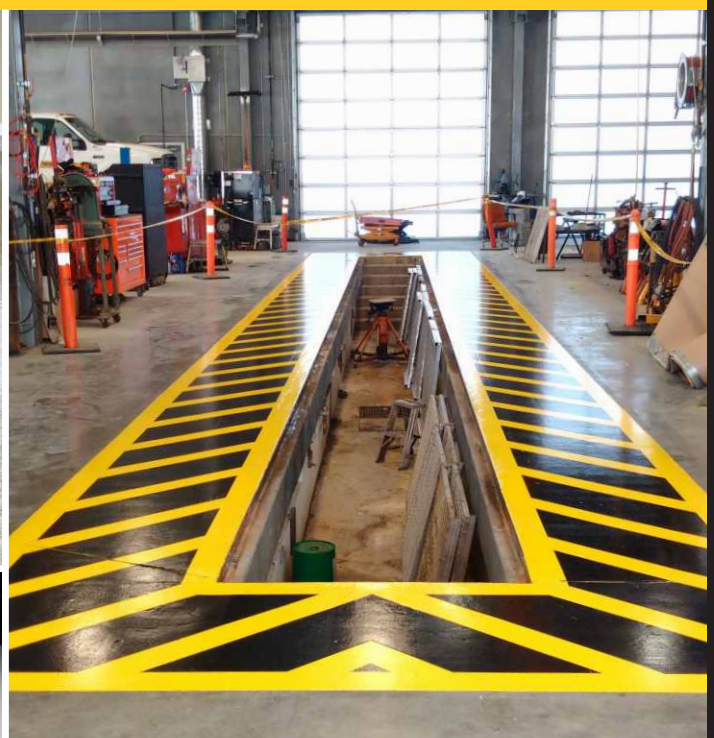


## INTERIOR

# DECORATIVE CONCRETE

Proform Concrete Services is a specialist in decorative concrete overlays and toppings and provides unique coatings that are durable and attractive. Customize your design to include a logo, add anti-slip products and choose from a variety of colours to suit your project whether it's a garage or shop floor, auto showroom, sports complex or restaurant.

- Epoxy
- Grind and Polish
- Polyaspartic
- Stained
- Custom Logos or Safety Lines
- Industrial Coatings
- Pharmaceutical Concrete





# DECORATIVE CONCRETE

Explore the possibilities of your next project by transforming traditional concrete into a eye-catching finish. Build a more sustainable and usable space or integrate landscaping for a beautiful focal point. There are various finishes to choose from that are versatile, durable and cost-effective. Enhance patios, walkways, downtown areas, parks, pools and more!

- Stamped
- Coatings
- Decorative Cutting
- Glass Seeded Concrete
- Exposed
- Acid Staining
- Sand Blast Finish
- Paving Stones

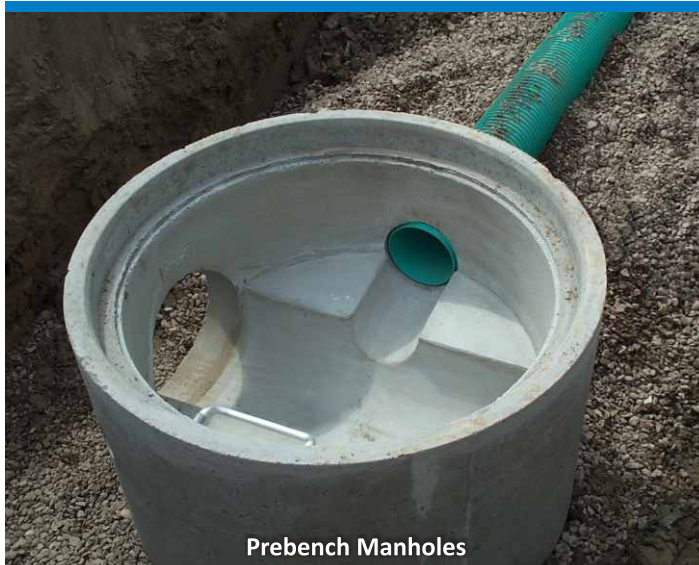


## OTHER SERVICES

# YOUR ONE STOP SHOP

**Proform Construction Products:** This division of Proform is uniquely positioned in the market to offer a wide array of products for the construction industry starting from breaking ground for underground services, to commercial precast products such as wall panels and fencing for new developments. We truly are your *One Stop Shop For All Your Concrete, Construction & Precast Needs!*

**Underground Products:** Proform manufactures precast products such as catch basins, manholes, vaults, chambers, boxes and concrete pipe. Whether it's municipal rehabilitation projects, new infrastructure installations or new subdivision construction, we have the capability to supply your underground needs.



Prebench Manholes



Box Culverts



Vaults



Trenches / Utilidors

**Commercial Precast:** We have two Alberta based plants that specialize in manufacturing and supplying general precast concrete products for the transportation, commercial and industrial sectors such as light pole bases, wall systems, barriers, parking curbs and retaining walls. We have a vast inventory and can support all types of projects with the help of our estimating and engineering team.

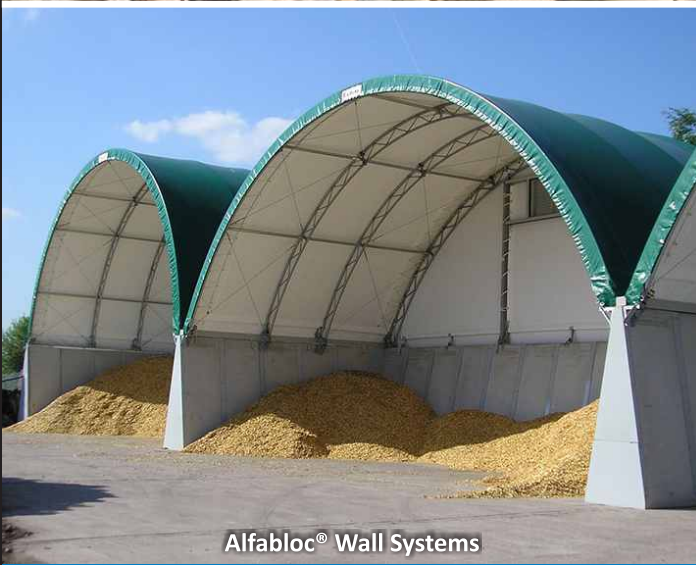
**Emco Corporation Distribution:** Proform Construction Products has an exclusive partnership with Emco Corporation giving their divisions, Emco Waterworks and KANN Supply, the ability to stock and sell our precast manholes and catch basins at all of their locations.



Light Pole Bases



Sound Walls & Fencing



Alfabloc® Wall Systems



Wall Panels

**OUR VISION:** Helping build communities from the underground up.



**info@proform.ca | 800-859-5541**

240 Burnt Park Way, Red Deer County, AB

**WWW.PROFORM.CA**